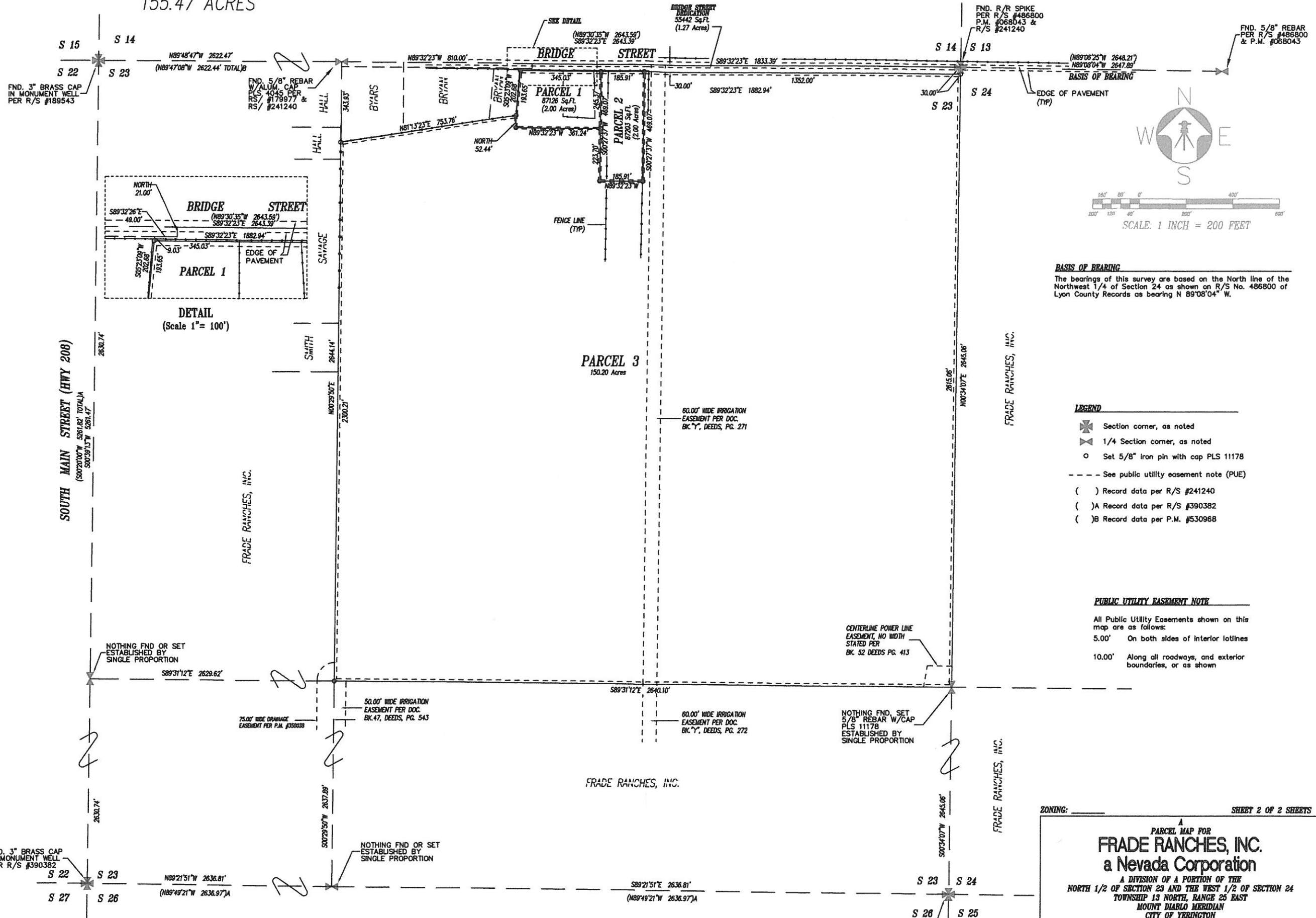


TOTAL AREA DIVIDED
155.47 ACRES



BASIS OF BEARING
The bearings of this survey are based on the North line of the Northwest 1/4 of Section 24 as shown on R/S No. 486800 of Lyon County Records as bearing N 89°08'04" W.

- LEGEND**
- ✦ Section corner, as noted
 - ✧ 1/4 Section corner, as noted
 - Set 5/8" iron pin with cap PLS 11178
 - See public utility easement note (PUE)
 - () Record data per R/S #241240
 - (A) Record data per R/S #390382
 - (B) Record data per P.M. #530968

PUBLIC UTILITY EASEMENT NOTE
All Public Utility Easements shown on this map are as follows:
5.00' On both sides of interior lotlines
10.00' Along all roadways, and exterior boundaries, or as shown

ZONING: _____ SHEET 2 OF 2 SHEETS

A
PARCEL MAP FOR
FRADE RANCHES, INC.
a Nevada Corporation
A DIVISION OF A PORTION OF THE
NORTH 1/2 OF SECTION 23 AND THE WEST 1/2 OF SECTION 24
TOWNSHIP 13 NORTH, RANGE 25 EAST
MOUNT DIABLO MERIDIAN
CITY OF YERINGTON
LYON COUNTY, NEVADA

<p>Denson Surveying a professional corporation SURVEYING & MAPPING Yerington, Nevada (775) 463-3811</p>	DRAWING #	MAP #	DRAWN BY
	14041 pm1	14041 pm1	RICK CHRISTIAN
	CALCULATION FILE	DATE	CHECKED BY
14041 pm1		6/25/2015	