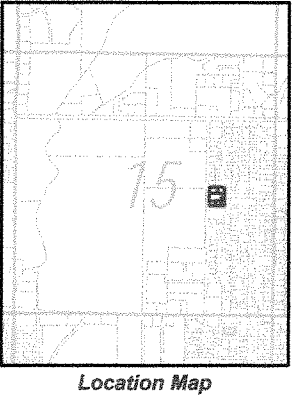
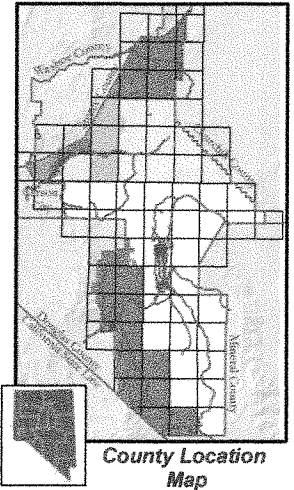
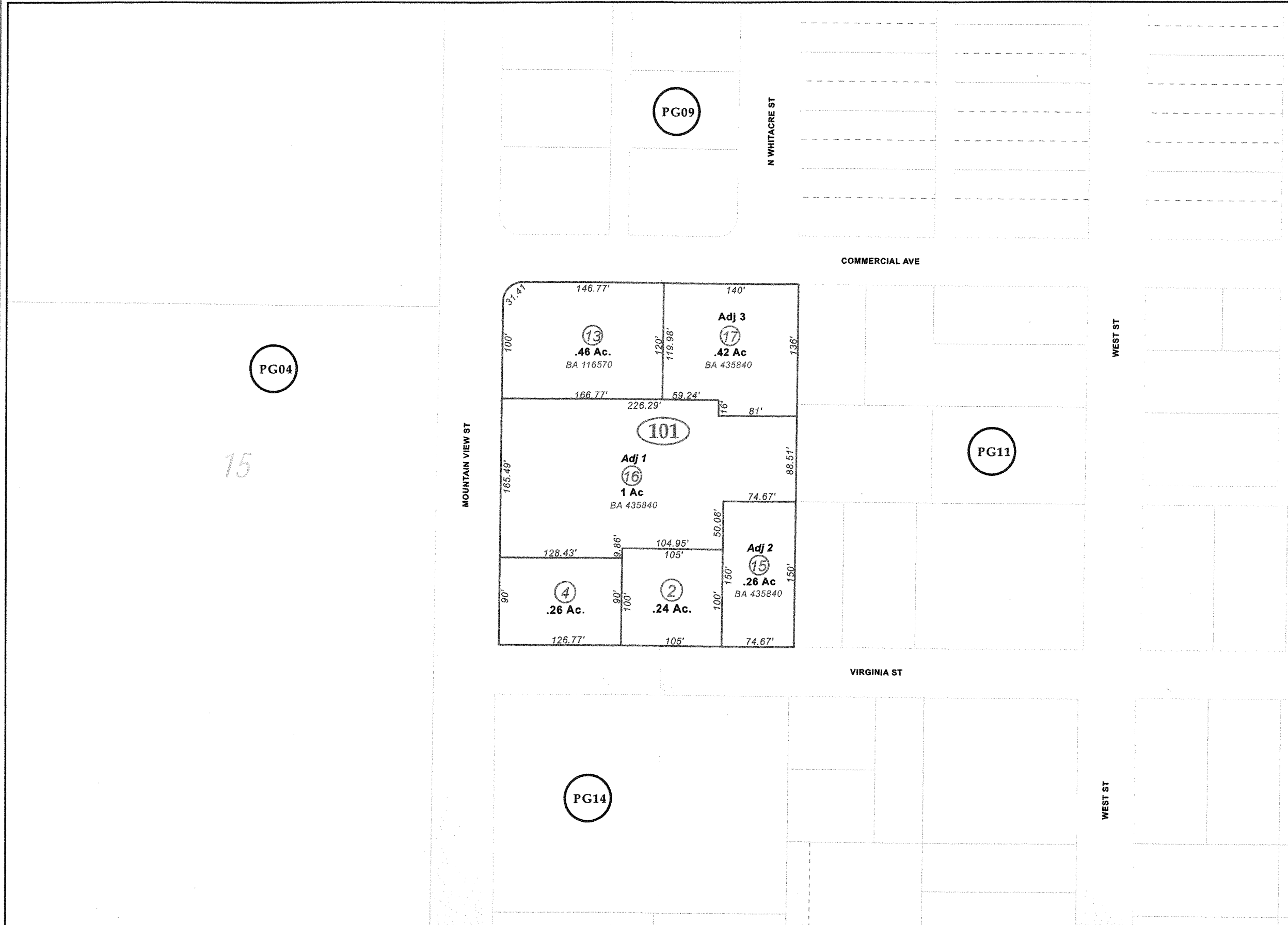


Portion NE1/4 SE1/4 Section 15, T13N - R25E, MD&M

1-10

SCANNED

YERINGTON PLANNING COMMISSION
102 S MAIN STREET
YERINGTON, NV. 89447



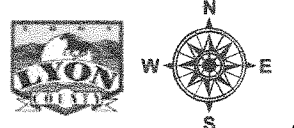
Map Elements

- ⊠ 1/4 Corner Section
- ✳ Section Ties
- 300' Dimensions
- 1 Parcel Lot
- ③ Parcel Number
- 0.13 Ac. Acreage of Parcel
- PM 136149 Recorded Map Image
- ▭ Parcel Boundaries
- ④11 Block Number
- 8K12 PG06 Parcel Book & Page Number
- PG24 Page Number

Cities & Townships

- Dayton
- Dayton Valley
- Fernley
- Mark Twain
- Mason Valley
- Mound House
- Silver City
- Silver Springs
- Smith Valley
- Stagecoach
- Yerington

Scale: 1" = 100'
Revised: February 11, 2013



NOTE: This is for assessment use only and does not represent a survey. No liability is assumed as to the accuracy of the data delineated hereon. Use of this plat for other than assessment purposes is forbidden unless approved by the Lyon County Assessor's Office.